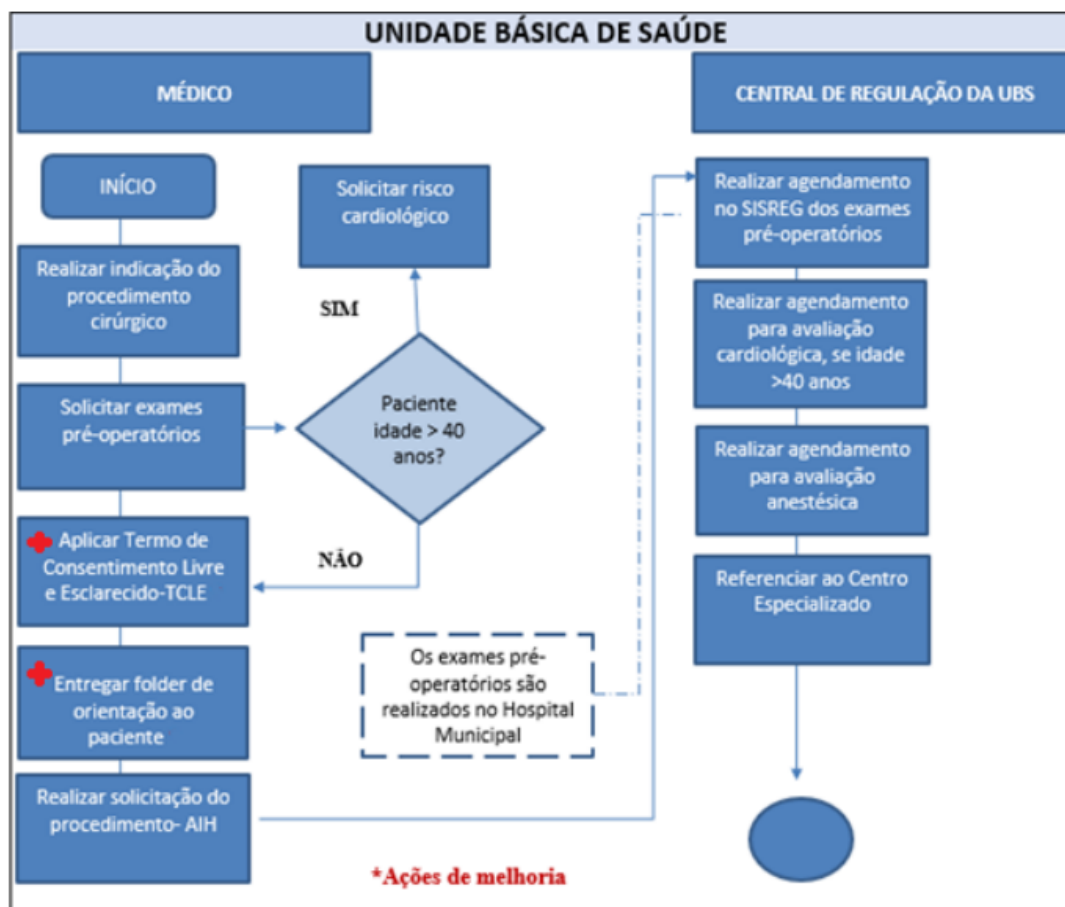
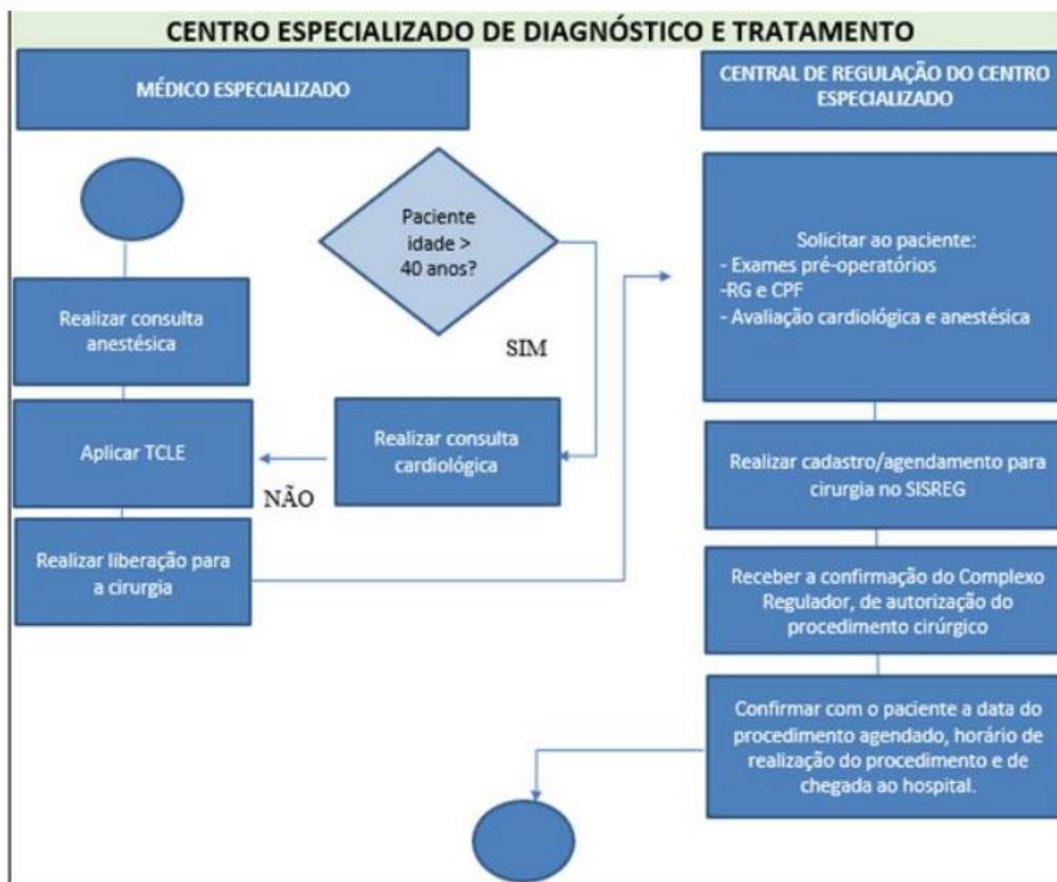


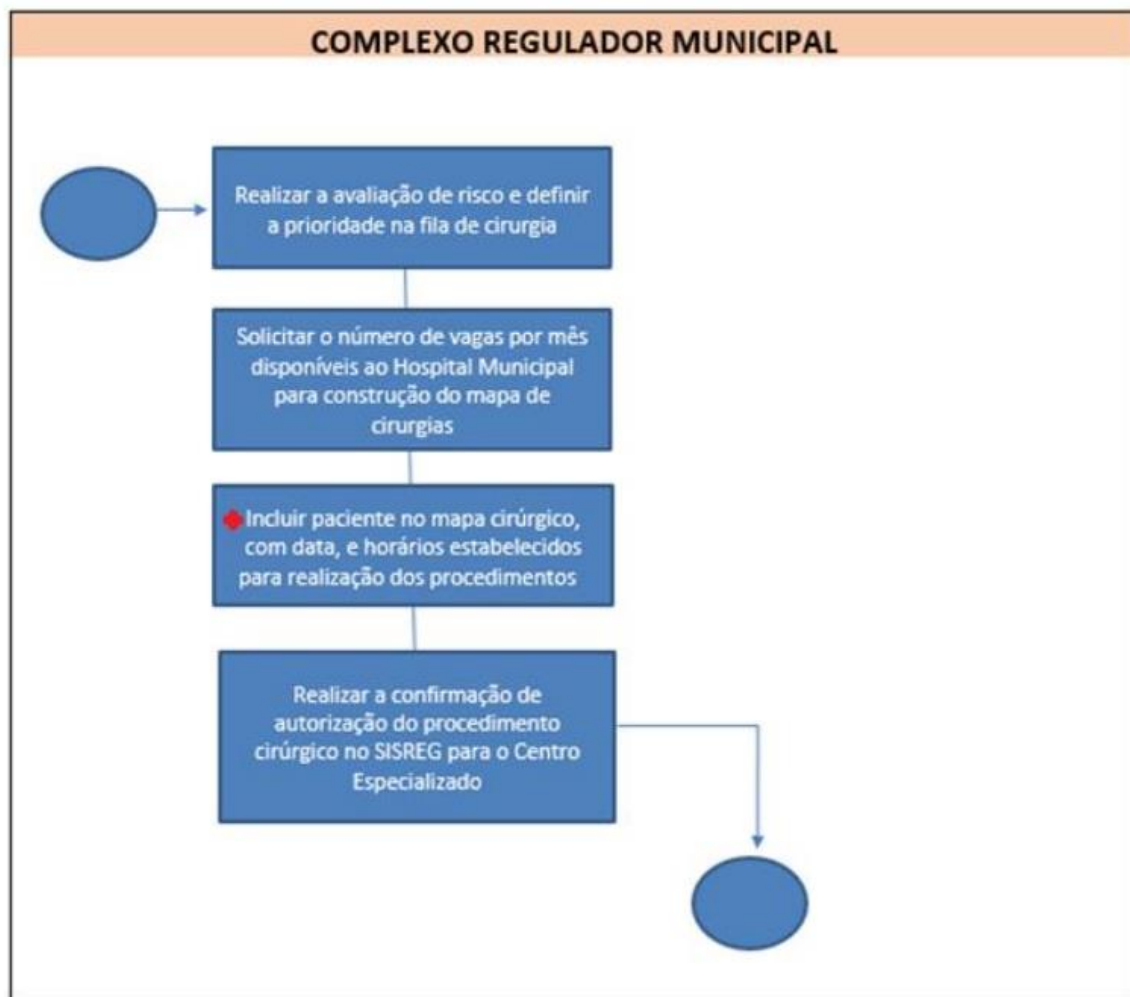
**Figura 5:** Etapa 1 do Fluxograma de atendimento ao paciente cirúrgico eletivo



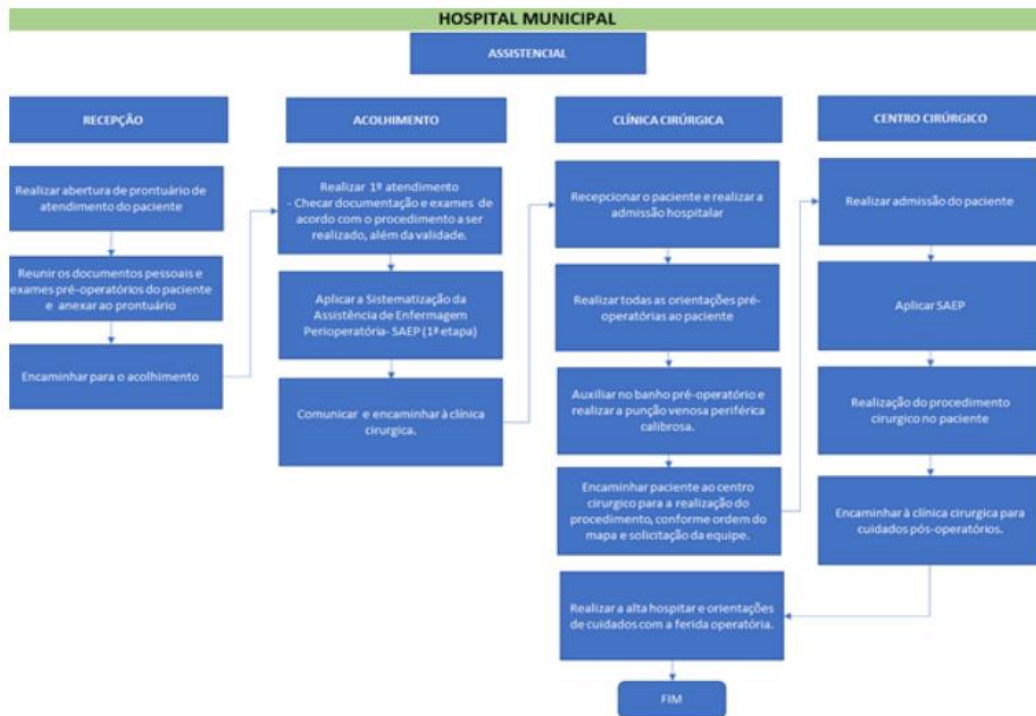
**Figura 6:** Etapa 2 do Fluxograma de atendimento ao paciente cirúrgico eletivo



**Figura 7:** Etapa 3 do Fluxograma de atendimento ao paciente cirúrgico eletivo



**Figura 8:** Etapa 4 do Fluxograma de atendimento ao paciente cirúrgico eletivo



Fonte: <https://doi.org/10.11606/D.22.2023.tde-10082023-093101>